

4125**4125P**

Youth Preserve CREAM

Cream



50 ml dispenser
100 ml dispenser



Short Description

Skin type

Preventive anti-aging cream to maintain youthful and fresh skin.

All skin types

Description

Youth Preserve CREAM is a completely new skin care cream for beautiful, youthful skin. The key lies in the activation of repair enzymes (Telomerases), the increased synthesis of Collagen and Hyaluronic acid plus protection of the Telomeres, which are responsible for the cell division. The highly-active repair stimulating lipids are the special feature in this product. These lipids verifiably protect the skin cells against oxidative stress; the Telomerase repair system remains active and premature Telomere degeneration is prevented. The additional content of Rice Peptides boosts the activity of repair enzymes. External influences (oxidation and UV radiation) cause less damage to the genetic material. The cells are more vital and live longer. **Youth Preserve CREAM** has a restorative effect on the skin tissue, which can be seen by the reduction in expression marks and wrinkles plus the increase in skin density and skin thickness. The cream has a lipid content of 29%. This emollient cream for vitalizing demanding skin is optimally suitable for women, who are looking for a more rich treatment cream product.

Purpose and function

- Prolongs the skin's youthfulness
- Helps to repair cell damage
- Fortifies the skin's barrier structure
- Beautiful skin in the long term
- Smoother and more even skin
- Increased tissue density
- Intensively moisturizing and moisture-retaining

Main active substances:

- **Youth Molecules:** Repair stimulating lipids to protect the skin cells against oxidative stress; the repair enzyme Telomerase remains active and premature Telomere degeneration is prevented; the skin is restructured, the density of the dermis increased and wrinkles smoothed

An in vitro study revealed the following results:

- | | |
|-------------------------------------------------------------------------|---------|
| • Collagen synthesis: | + 483 % |
| • Hyaluronic acid: | + 35 % |
| • Protection of cells against oxidative stress: | + 34 % |
| • Protection of mitochondriae and cell nuclei against oxidative stress: | + 76 % |
| • Stops Telomere shortening: | + 21 % |

A 2% solution of the lipids was applied onto a group of 15 female volunteers 2x per day.

The thickness of the epidermis and dermis was then measured ultrasonically:

- Skin thickness: + 7.5% after 2 months

28 female volunteers each used a cream with 2% lipids at the corner of the eyes in comparison with a placebo 2x per day. The complexion was then examined by means of an impression and image analysis:

Volume of wrinkles after 1 month - 26%

- **Rice Peptides Extract:** Highly-active peptide extract from *Oryza Sativa*; activates the release of Sirtuin in the skin. Sirtuin, also referred to as longevity proteins, help to repair cell damage, strengthen the cell's defenses and prolong their lives.

In vitro studies with 1% rice extract:

- 1. Cell repair is promoted: - 22% DNA damage
- 2. The skin cells live longer: + 17% longer Keratinocytes lifetime
+ 10% Fibroblasts [connective tissue cells]
- **Long- and short-chain Hyaluronic acid:** Produced using biotechnology, it possesses a fill-in effect which "pads out" the skin from the inside out. The skin is lifted extensively.
- **Genuine Japanese Silk:** Possesses a structure similar to the skin; is rapidly absorbed, protects against dehydration, leaves the skin supple and soft.
- **Pentavitin®**:** Sustainably improves the skin's moisture retention capacity, as this combination of various sugar compounds binds firmly to the surface of the skin and is not rinsed off during washing. Pentavitin® prevents moisture loss – even under dry environmental conditions.
- **Isostearyl-Isostearate:** Emollient based on sustainable raw plant materials; improves the cohesion of the lipids in the horny layer [Stratum corneum] and reduces the skin's trans-epidermal water loss.
- **Vitamin E Acetate:** Radical scavenger, preventive cell protection, combats premature skin aging.

Professional Application

For a massage: distribute **Youth Preserve CREAM** onto the face, neck and neckline. To improve its sliding properties, pour on a few drops of **Massage Serum** and massage as usual. Depending on the time of year and the time of day, use **Premium Age Protector SPF 30** or **Premium Age Protector Ultra SPF 30** (if the skin could still be exposed to UV rays) or **Youth Preserve CREAM** as a finishing product.

Home Care Application

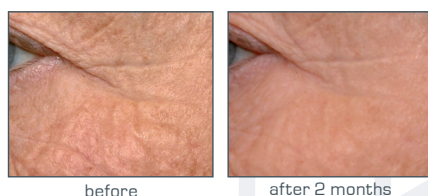
In the morning: **Youth Preserve SERUM** and then **Premium Age Protector SPF 30** or **Premium Age Protector Ultra SPF 30** or **Youth Preserve CREAM**.

In the evening: after cleansing use **Youth Preserve Cream** as a night cream

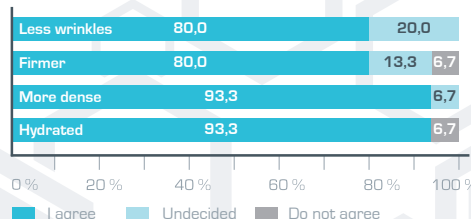
If the skin is not sensitive to UV radiation any more **Youth Preserve CREAM** can be used as a day and night cream.

The efficacy of Youth Molecules has been proven in clinical trials:

Improvement of the skin relief



Self assessment of the test persons after 2 months



Source: Sederma GmbH